

Broader Regional Market Metrics (CTS)

**New York Independent
System Operator**

May 2017

Prepared by NYISO Operations Regional Market Coordination

May 2017 Broader Regional Markets Highlights (CTS)

May 2017 Broader Regional Markets Highlights

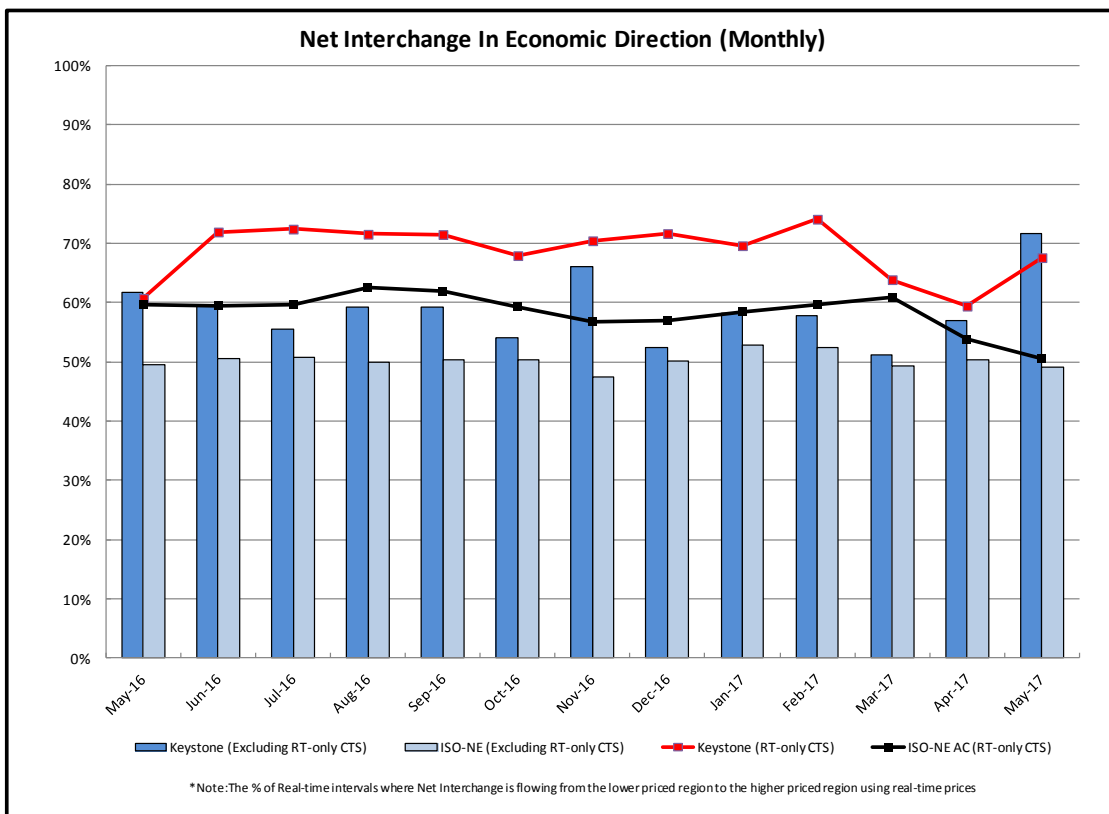
- PJM
 - At PJM Keystone, there was an average of 843 MWs¹ per hour of CTS offers and an average of 127 MWs per hour of CTS schedules.
 - Interchange at PJM Keystone associated with CTS transactions scheduled only in real-time flowed in the economic direction in 67.6% of the real-time intervals, as compared to all other interchange at the interface which flowed in the economic direction in 71.5% of the real-time intervals.

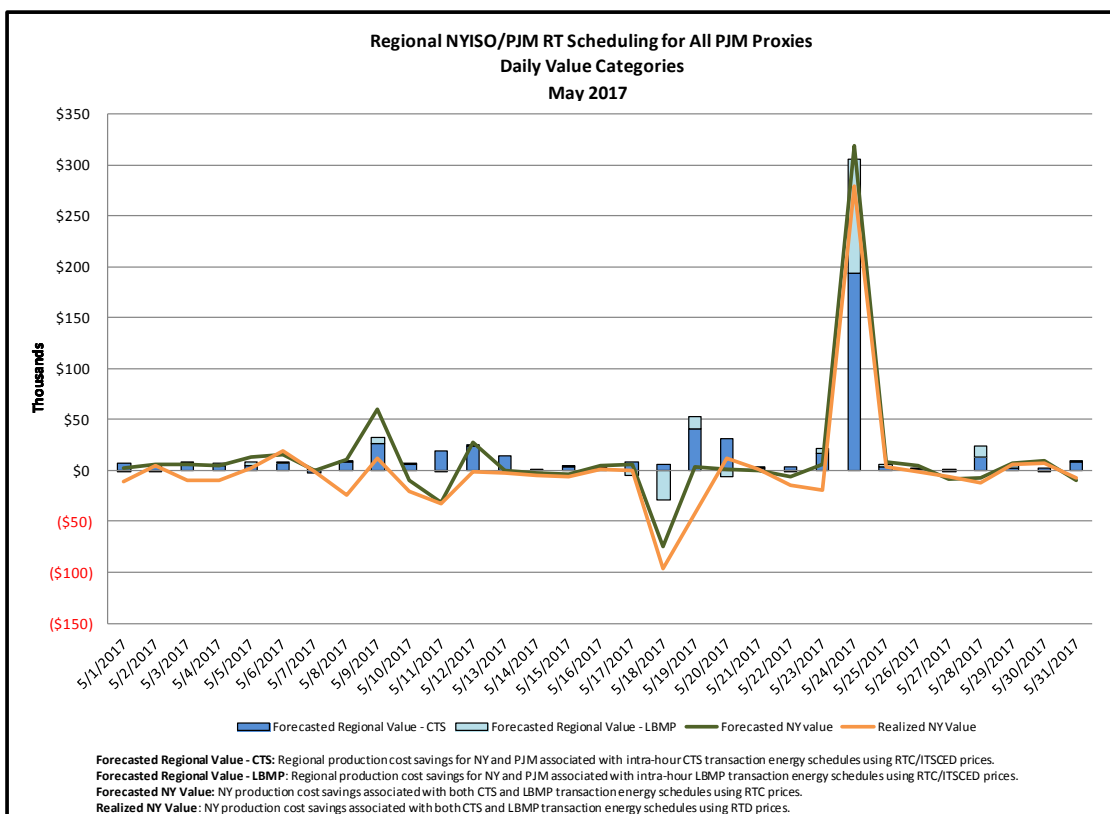
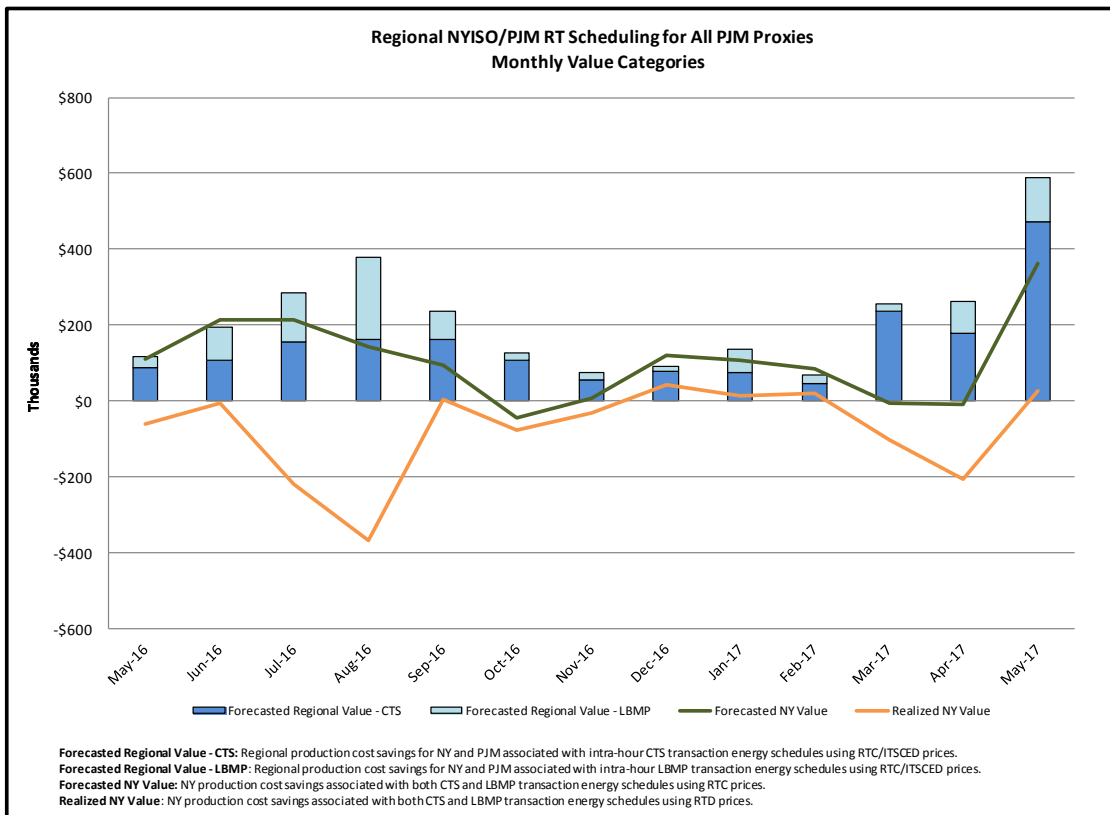
- ISO-NE
 - At NE Sandy Pond, there was an average of 2283 MWs¹ per hour of CTS offers, and an average of 924 MWs per hour of CTS schedules.
 - Interchange at NE Sandy Pond associated with CTS transactions scheduled only in real-time flowed in the economic direction in 50.5% of the real-time intervals, as compared to all other interchange which flowed in the economic direction in 49.0% of the real-time intervals.

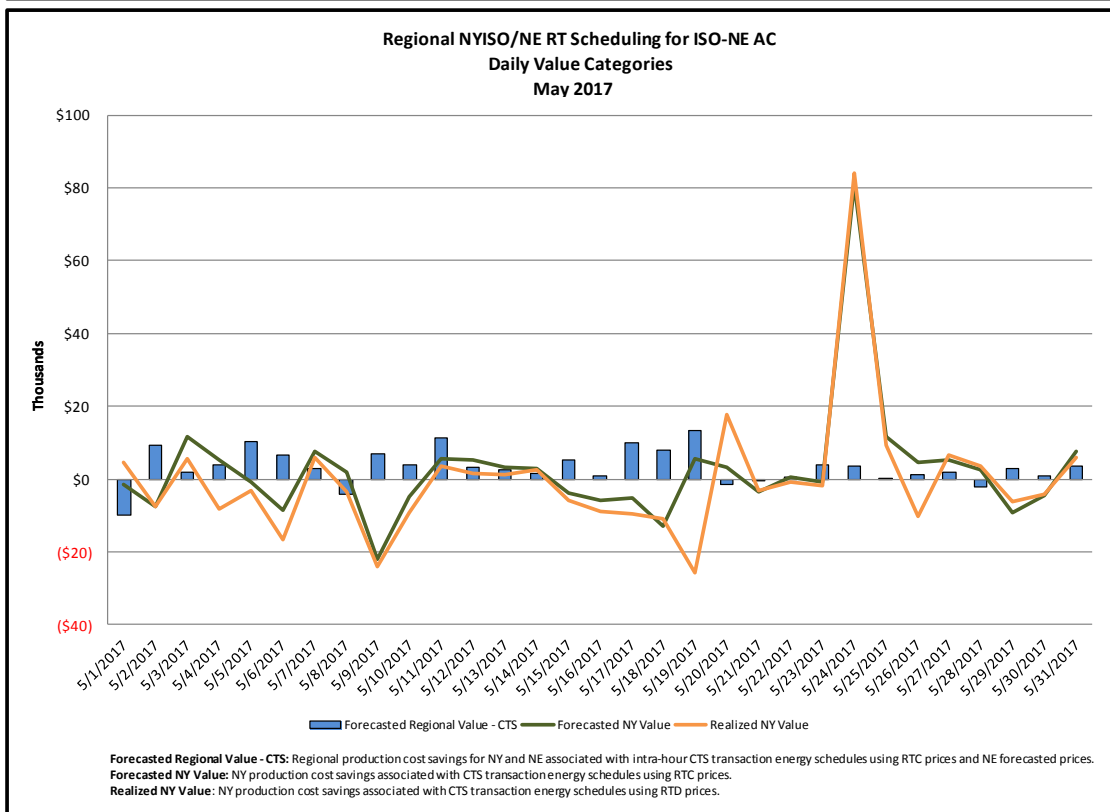
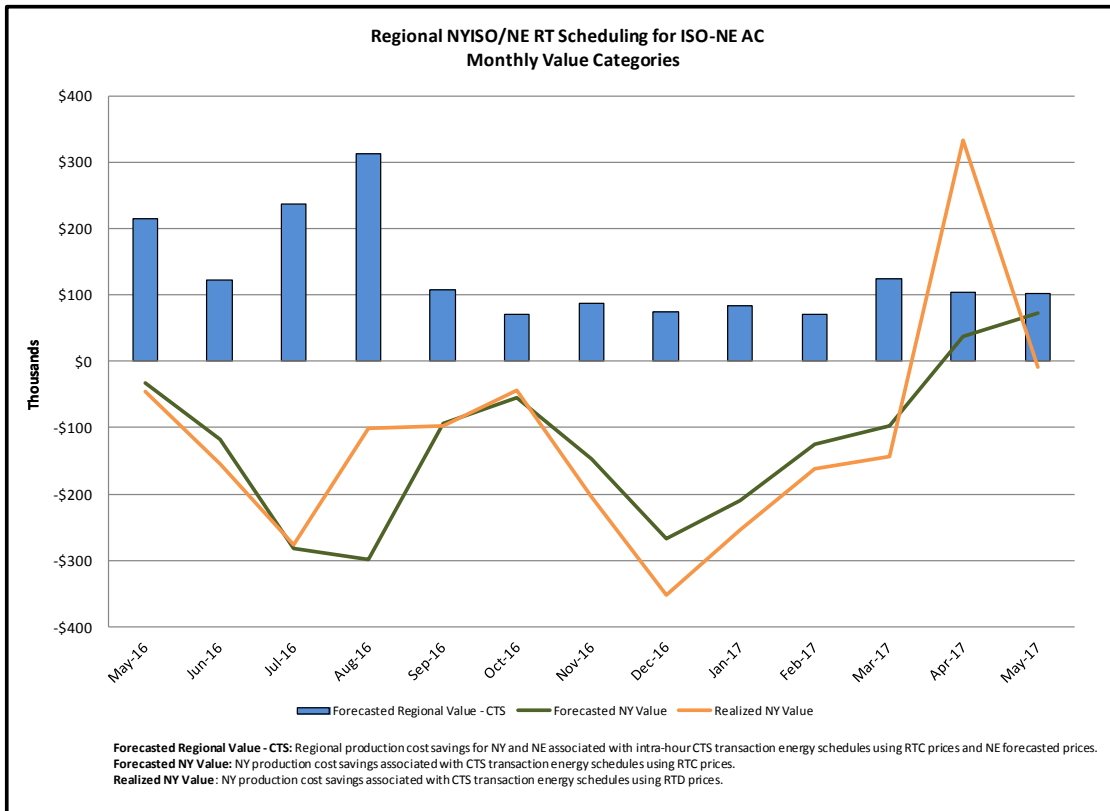
Pricing Data²

Interface	Max Forecasted Price Spread	Min Forecasted Price Spread	Forecasted Price Spreads minus Real-time Price Spreads					
			< \$-20	\$-20 to \$-10	\$-10 to \$0	\$0 to \$10	\$10 to \$20	> \$20
Keystone	\$967.58	(\$1,000.00)	6.9%	9.5%	38.0%	34.4%	5.7%	5.6%
HTP	\$1,272.19	(\$174.63)	6.5%	10.8%	38.1%	34.6%	5.9%	4.1%
NEPTUNE	\$978.36	(\$199.39)	11.9%	10.4%	33.2%	30.7%	6.8%	6.9%
VFT	\$1,681.33	(\$172.74)	6.5%	11.0%	38.4%	34.3%	5.7%	4.0%
Sandy Pond	\$59.83	(\$1,188.49)	12.6%	11.2%	32.9%	31.8%	6.9%	4.6%





1. All MW Values include the absolute sum of both imports + exports. Wheels have been excluded.
2. "Forecasted Prices" refer to NYISO's RTC LBMP and RTO's LMP used in RTC. "Real-time Prices" refer to NYISO's RTD LBMP and RTO's Real-time LMP. Forecasted Prices are used during NYISO's RTC evaluation to schedule transactions. Real-time Prices are used to settle transactions. Price Spreads are always calculated as NYISO's LBMP minus RTO's LMP.







Regional NYISO RT Scheduling

<u>Category</u>	<u>Description</u>
 Forecasted Regional Value - CTS	Forecasted regional production cost savings from the intra-hour (non-TOH) energy schedule changes ¹ on CTS bids (Intra-hour CTS Schedule Changes * [NY RTC LBMP - PJM or ISO-NE's Forecasted LMP]).
 Forecasted Regional Value - LBMP	Forecasted regional production cost savings from the intra-hour (non-TOH) energy schedule changes ¹ on LBMP bids (Intra-hour LBMP Schedule Changes * [NY RTC LBMP - PJM or ISO-NE's Forecasted LMP]).
 Forecasted NY Value	Forecasted NY production cost savings from the intra-hour (non-TOH) energy schedule changes ¹ on CTS and LBMP bids (Total Intra-hour CTS & LBMP Schedule Changes * NY RTC LBMP).
 Realized NY Value	Realized NY production cost savings from the intra-hour (non-TOH) energy schedule changes ¹ on CTS and LBMP bids (Total Intra-hour CTS & LBMP Schedule Changes * NY RTD LBMP).

¹ Note: Schedule changes associated with manual Operator actions such as curtailments and/or transaction derates, and that have a significant impact (either positive or negative) to the above metrics, are generally excluded.

